

Quick User Guide

RS

speco technologies®



4, 8, 16 Channel Digital Video Recorder

Model: D4RS, D8RS, D16RS, D4WRS, D8WRS, D16WRS, D4WRSP,
D8WRSP, D4WRSM, D8WRSM, D16WRSM, D4WRSPM, D8WRSPM

Visit www.specotech.com for the latest software and updates.

Tech Support: 1-800-645-5516

Rev. 12/26/12

OSD Main Menu

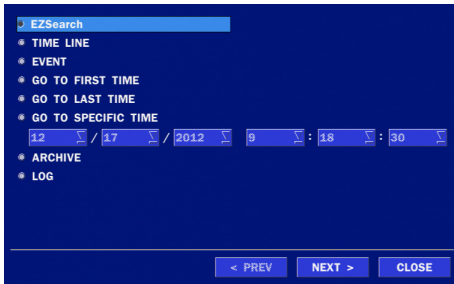
- To enter the main menu, press the setup button on the remote control or right click on the mouse and select setup from the submenu
- Enter username and password. The default username is admin and password is 1111.

SETUP
AUDIO
SEARCH
SNAPSHOT
CAMERA PTZ
ENABLE MAIN MONITOR SEQUENCE
ENABLE MANUAL RECORD
DISABLE ALARM OUT
MANUAL DIGITAL DETERRENT
DISPLAY
SITE INFORMATION
SYSTEM INFORMATION
EXPORT HELP
SYSTEM LOCK
SYSTEM SHUTDOWN

Option	Description
SETUP	Select this option to enter the Setup menu.
AUDIO	Select this option to set an audio channel to output. (Channel 1 through 4, Audio Mute)
SEARCH	Select this option to enter the Search menu.
SNAPSHOT	Select this option to create a JPEG snapshot of the selected channel.
CAMERA PTZ	Select this option to access the PTZ interface.
ENABLE MAIN MONITOR SEQUENCE	Select this option to enable/disable video sequence function.
ENABLE MANUAL RECORD	Select this option to enable/disable manual recording. Also known as Panic Record. Default is set to continuous recording.
DISABLE ALARM OUT	Select this option to enable/disable Alarm outputs.
MANUAL DIGITAL DETERRENT	Displays a window where the user can manually trigger the Digital Deterrent audio message.
DISPLAY	Select between different multi-view display formats.
SITE INFORMATION	Displays a window with the recording settings of a selected channel.
SYSTEM INFORMATION	Displays a window with the system information.
EXPORT HELP	Displays window with instructions for exporting video.
SYSTEM LOCK	Locks the DVR from unauthorized user access.
SYSTEM SHUTDOWN	Select this option to shutdown system.

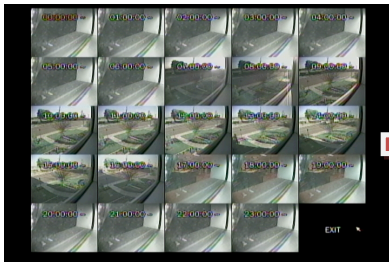
Playback

- Select SEARCH from the sub-menu



EZSearch

- Select EZSEARCH and click NEXT.
- Select the specific MONTH, DATE and click NEXT.
- Select the specific CHANNEL and click NEXT. Thumbnail view of each hour will be shown.
- Double click on the hour of interest. Thumbnail view of each 2.5 minutes within the hour will be shown.
- Double click on the thumbnail to begin playback.



Time Line

- Select TIME LINE and click NEXT.
- Select the specific MONTH, DATE, and click NEXT.
- Select the specific HOUR, MINUTE, and CHANNEL and click PLAY. Playback will begin.

Event

- Select EVENT and click NEXT.
- Select the specific MONTH, DATE and click NEXT.
- Select the specific EVENT and click PLAY. Playback will begin.

Specific Time

- Select GO TO SPECIFIC TIME and select the specific time to begin playback.
- Click on PLAY to begin playback.

Export

- Go into playback mode as described in the previous section.

Export

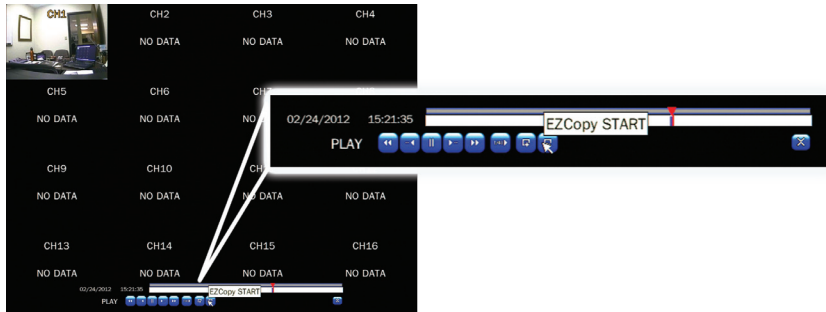
- Click on **EXPORT** near the bottom of the playback screen.



- Select the ARCHIVE MEDIA TYPE and click NEXT.
 - STILL IMAGE: snapshots
 - NSF: proprietary *.nsf video format
 - AVI: *.avi video format, integrated subtitles, separated subtitles (Mac compatible)
- Select the MEDIA TYPE (USB DRIVE) and click NEXT.
- Select the specific CHANNEL and DURATION and click START to begin export.

EZCopy

- Click on EZCOPY START near the bottom of the playback screen. This will begin the start time of the recorded data to be exported.



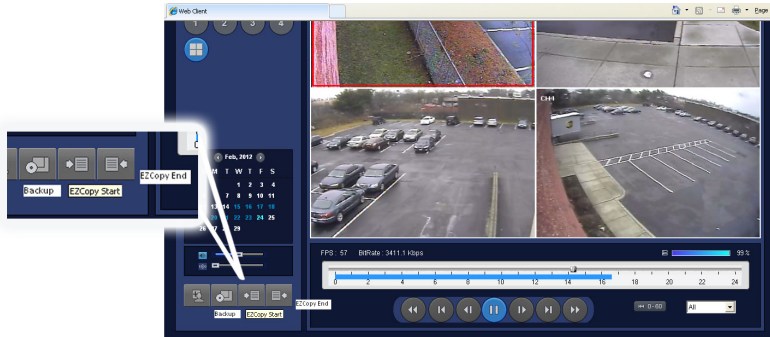
- The DVR will continue to play the recorded video.
- Move cursor to the end time.
- Click on EZCOPY STOP and this will end the data export.
- Select the FILE FORMAT and click NEXT.
- Select the specific CHANNEL and click START to begin export.

Event Export

- To export an event, go into Live mode and go to SEARCH from the sub-menu.
- Select EVENT and click NEXT.
- Select the specific MONTH, DATE and click NEXT. The list of events will be shown.
- Select the specific EVENT and click BACKUP.
- Select the MEDIA TYPE (USB DRIVE) and click BACKUP to begin export of event.

Export via Web-Browser Viewer

- Start Internet Explorer and enter the IP address and port of the DVR.
 - For example `http://[ip address] : [port]` → `http://192.168.80.6.80`
- The ActiveX controls and plug-ins dialog will be prompted for installation.
- Install the plug-ins.
- Click on CONNECT and enter the IP, port number, username and password of the DVR.
 - The default usernames and passwords are admin / 1111 and user1 / 1111.
- Click on SEARCH to go into PLAYBACK.



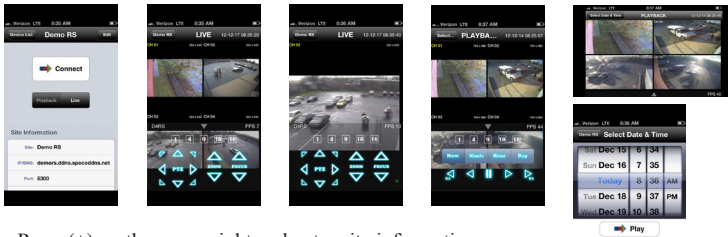
- Click on EZCOPY START near the bottom of the playback screen. This will indicate the start time of the recorded data to be exported.
- The DVR will continue to play the recorded video.
- Move time bar cursor to go to the time to end backup.
- Click on EZCOPY END and this will indicate the end time of the data export.
- Select AVI BACKUP button.
- Select the CHANNEL, FILE FORMAT, FILE PATH and click OK to begin export.

Viewing DVR via Mobile Devices

The RS provides mobile surveillance software for the iPhone®, iPad® and the Android™.

iPhone® / iPad®

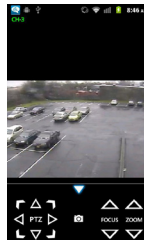
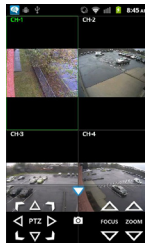
- Search for ‘Speco Player’ in the Apple App Store and install the app.



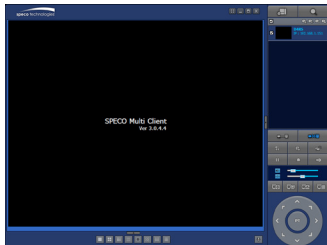
- Press (+) on the upper right and enter site information.
- Click SAVE to save the site information.
- Select the saved site from “Devices”
- Select a channel(s) to view.
- Select Playback/Live then click CONNECT

Android™

- Search for ‘Speco Player’ in the Android™ Market and install the app.
- Select the ADD menu and enter site information.
- Click ADD to save the site information.
- Select the saved site from “Devices” for network connection.
- Select which channels to view and press Live View
- The app will now display the live streaming video.



SpecoTech Multi-Client Viewer



SpecoTech Multi-Client Viewer Software is a multiple site monitoring client software that allows streaming of video and audio, and transmission of alarm signals from the DVRs over the network. The SpecoTech Multi-Client can display up to 16 DVRs and supports dual monitors. PTZ camera control is also supported by this software.

By attaching a microphone and speaker system to devices on site, the user may make bi-directional audio communication over the network.

Refer to the complete manual for more information.

The SpecoTech Multi-Client Viewer Software and manual are included on the CD.